



N224001 Exclusive to Lanzarote Investments luxury new build development in Playa Blanca

€305,000

Ref: N224001

Playa Blanca

Introducing Serena del Mar! the latest exclusive offering from Lanzarote Investments, continuing the legacy of the esteemed Serena projects in Playa Blanca. This exceptional off-plan development is already underway and the amazing showhouse is now available to view ! we have a range of meticulously designed 2 bedroom 2 bathroom villas, each boasting exciting extras such as an amazing private roof terrace alongside easy access to an inviting communal pool to relax in. Nestled in an enviable location, just a leisurely stroll from the vibrant Marina Rubicon and the picturesque oceanfront promenade of Playa Blanca, Serena del Mar...

Telephone: +34 928 930970

Email: info@kpgnewhomes.com

C/VARADERO 22, CC YAIZA, LOCAL 7, PLAYA BLANCA 35580 , LANZAROTE



Gallery



Property photo



Property photo

Property photo

Property photo



Property Details

Location: Playa Blanca

Introducing Serena del Mar! the latest exclusive offering from Lanzarote Investments, continuing the legacy of the esteemed Serena projects in Playa Blanca. This exceptional off-plan development is already underway and the amazing showhouse is now available to view ! we have a range of meticulously designed 2 bedroom 2 bathroom villas, each boasting exciting extras such as an amazing private roof terrace alongside easy access to an inviting communal pool to relax in. Nestled in an enviable location, just a leisurely stroll from the vibrant Marina Rubicon and the picturesque oceanfront promenade of Playa Blanca, Serena del Mar delivers the coastal lifestyle perfectly. These properties effortlessly blend style and comfort using all the latest materials and boasting thoughtful touches of luxury, a fully fitted kitchen, private parking and ample plots perfect for alfresco dining with the family or fitting a private pool, all combining to deliver the dream home in Playa Blanca you have been searching for till now . With limited availability now left and soaring demand, secure your slice of paradise today. Contact us to view the showhouse or reserve yours now !. *All drawings and images are artistic impressions only, and any furniture shown is for illustration purposes only and not included in the price. We reserve the right to change prices, inclusions, areas, and dimensions without notice or obligation, and construction time is subject to contractual variance.*

Property Features

- Communal Pool
- Private Parking
- Near a Marina
- Near Resort Center
- Mountain Views
- Pool Views
- Fully fitted kitchen
- Double Glazing
- Communal Garden
- Private Garden
- Al fresco dining area
- Ground floor access

Telephone: +34 928 930970

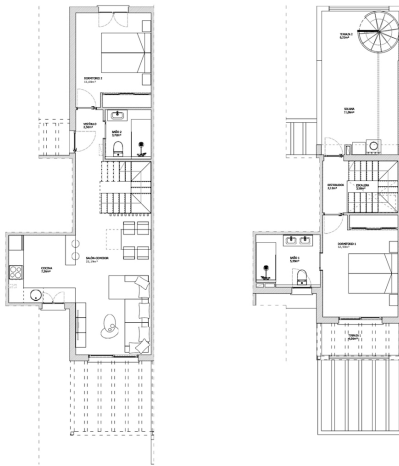
Email: info@kpgnewhomes.com

C/VARADERO 22, CC YAIZA, LOCAL 7, PLAYA BLANCA 35580 , LANZAROTE

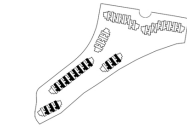


FloorPlans

Vivienda - tipo 2b

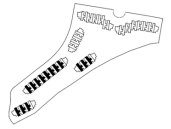


Vivienda - tipo 2a



DESCRIPCIÓN	Superficie (m ²)	Superficie construida	Superficie no construida
Superficie total	82,20 m ²	82,20 m ²	0,00 m ²
Superficie construida	82,20 m ²	82,20 m ²	0,00 m ²
Superficie no construida	0,00 m ²	0,00 m ²	0,00 m ²
Superficie útil	82,20 m ²	82,20 m ²	0,00 m ²
Superficie cubierta	82,20 m ²	82,20 m ²	0,00 m ²
Superficie descubierta	0,00 m ²	0,00 m ²	0,00 m ²
Superficie total	82,20 m ²	82,20 m ²	0,00 m ²
Superficie útil	82,20 m ²	82,20 m ²	0,00 m ²
Superficie cubierta	82,20 m ²	82,20 m ²	0,00 m ²
Superficie descubierta	0,00 m ²	0,00 m ²	0,00 m ²
Superficie total	82,20 m ²	82,20 m ²	0,00 m ²

Residencial Serena del Mar - 10 viviendas unifamiliares
Playa Blanca, Yaiza, Lanzarote



DESCRIPCIÓN	Superficie (m ²)	Superficie construida	Superficie no construida
Superficie total	82,20 m ²	82,20 m ²	0,00 m ²
Superficie construida	82,20 m ²	82,20 m ²	0,00 m ²
Superficie no construida	0,00 m ²	0,00 m ²	0,00 m ²
Superficie útil	82,20 m ²	82,20 m ²	0,00 m ²
Superficie cubierta	82,20 m ²	82,20 m ²	0,00 m ²
Superficie descubierta	0,00 m ²	0,00 m ²	0,00 m ²
Superficie total	82,20 m ²	82,20 m ²	0,00 m ²
Superficie útil	82,20 m ²	82,20 m ²	0,00 m ²
Superficie cubierta	82,20 m ²	82,20 m ²	0,00 m ²
Superficie descubierta	0,00 m ²	0,00 m ²	0,00 m ²
Superficie total	82,20 m ²	82,20 m ²	0,00 m ²

Residencial Serena del Mar - 10 viviendas unifamiliares
Playa Blanca, Yaiza, Lanzarote



Telephone: +34 928 930970

Email: info@kpgnewhomes.com

C/VARADERO 22, CC YAIZA, LOCAL 7, PLAYA BLANCA 35580 , LANZAROTE

